



Public Meeting South Valley Drinking Water Project

Preliminary Engineering Report for Phases 8 and 9

May 11, 2023



Project Team

ABCWUA

David Laughlin, PE, Chief Engineer – Planning & Engineering Division, ABCWUA

Tom Matthews, PE, Principal Engineer & Project Manager, ABCWUA
Smith Engineering

Jared Lujan, PE, Team Leader/Vice President, Smith Engineering

Isai Garcia, PE, Civil Engineer & Project Manager, Smith Engineering
Bernalillo County

Steven Michael Quezada, County Commissioner – District 2

Brian Lopez, Technical Services Director



Communications Team

ABCWUA

Rachel Stone, Communications Specialist
505-289-3071, rstone@abcwua.org

CWA Strategic Communications

Patti Watson, CWA Strategic Communications
505-245-3131 Office, 505-269-9691 Cell, pattiw@cwastrategic.com

Ty Stevers, CWA Strategic Communications
505-245-3128 Office, 505-417-9989 Cell, tys@cwastrategic.com



Background

For the last 20 plus years, Bernalillo County and the Water Utility Authority have been working to provide safe, reliable drinking water to the South Valley.

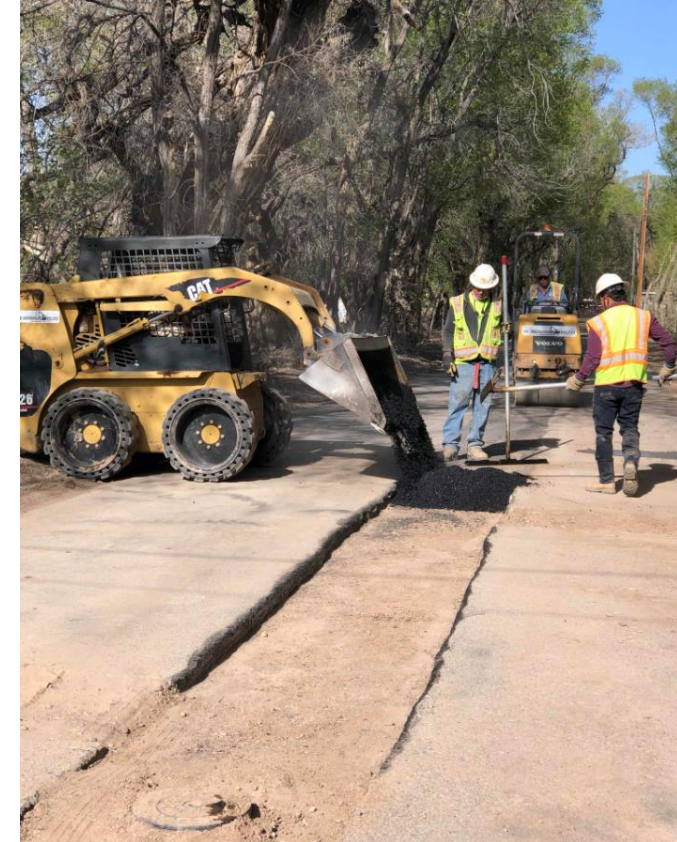
Phases 1-7, constructed between 2002 and 2022, have brought water to the South Valley area west of the Rio Grande, east of Coors Blvd., north of Isleta Pueblo and south of Metzgar Rd.

Phases 8 and 9 will bring water to the area west of Coors Blvd., east of Douglas Rd., north of Isleta Pueblo, and south of Dennis Chavez.

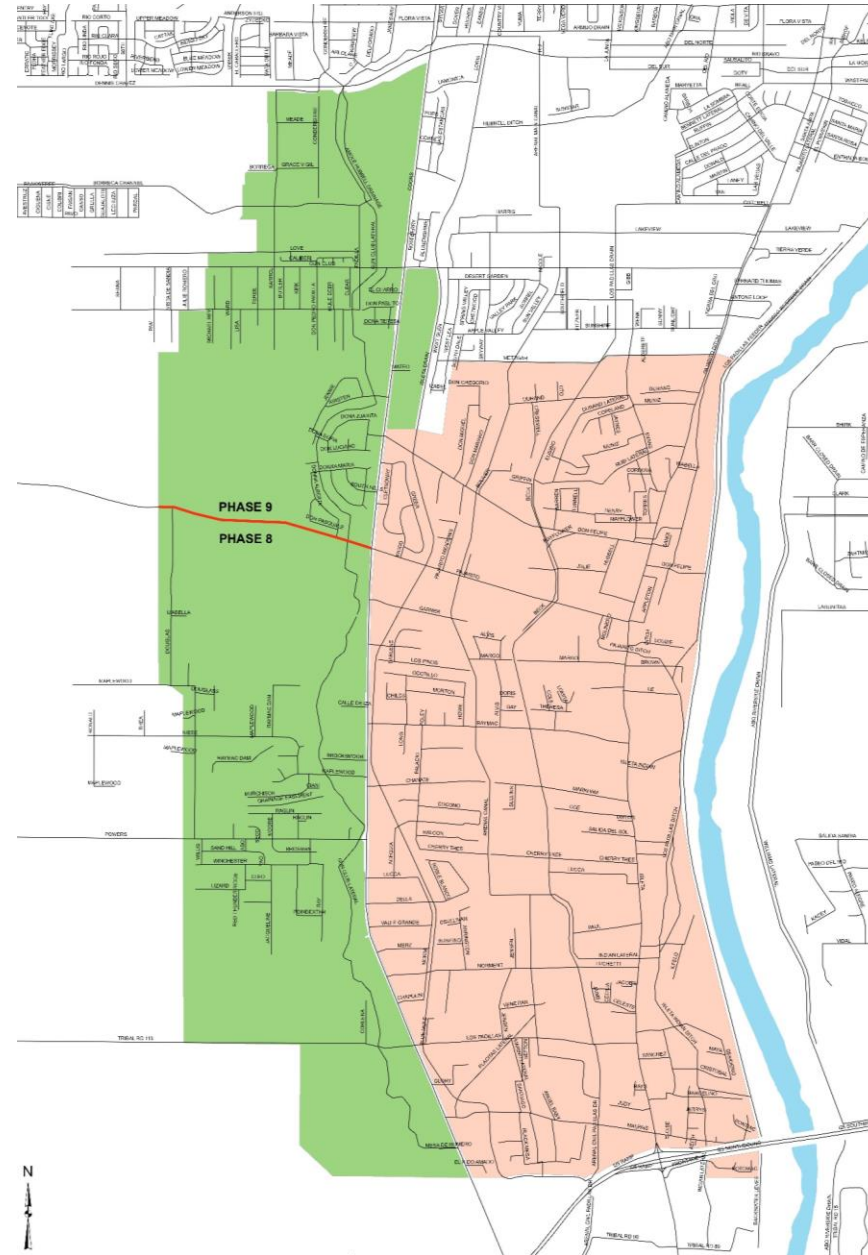


Benefits

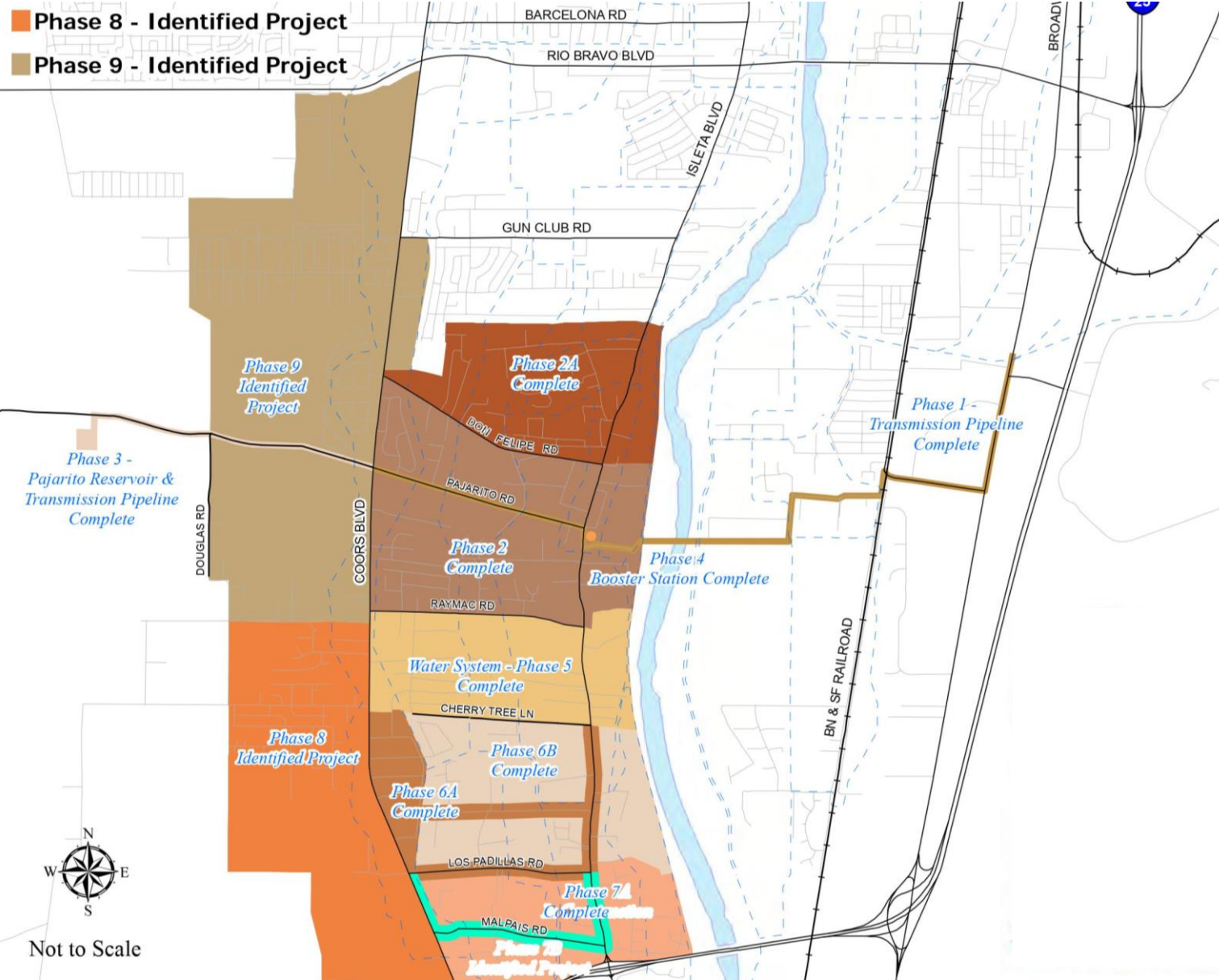
- **Safe, Reliable Water Source** – continuation of a 20-year project to deliver drinking water to the South Valley
- **Clean Drinking Water** – leaking septic systems and aging shallow wells are a challenge for many South Valley residents
- **Fire Protection** – will expand reliable fire protection for South Valley residents
- **Property Value** – fire protection and available water mains may increase property values



South Valley Drinking Water Serviceability Map



History

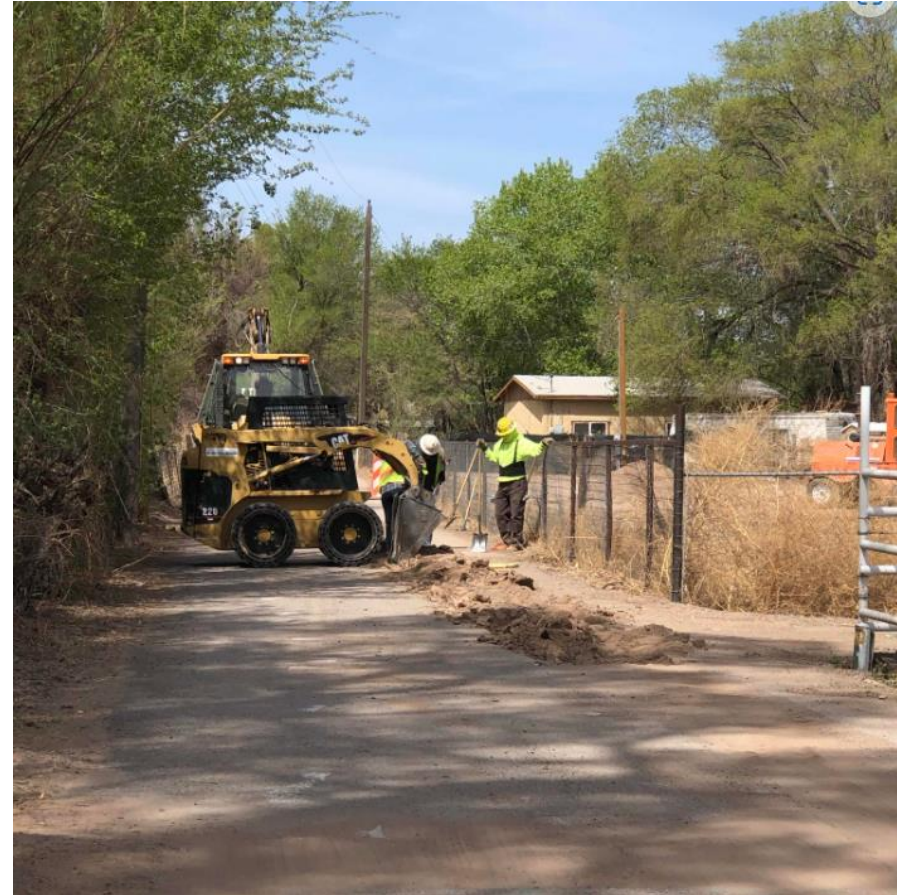




By the Numbers

To date, the project has installed about:

- **23,210** linear feet of water transmission line
- **317,200** linear feet of water distribution line
- **2,115** water services

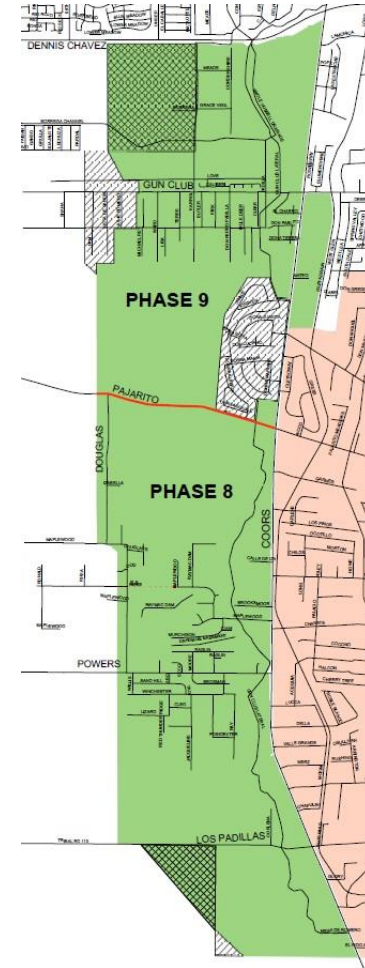




Project Limits – Phases 8 & 9

Planning is underway for Phases 8 and 9, roughly bordered by:

- Dennis Chavez Blvd on the north
- South of Los Padilla Rd SW on the south
- Douglas Road SW on the west
- Coors Blvd. on the east





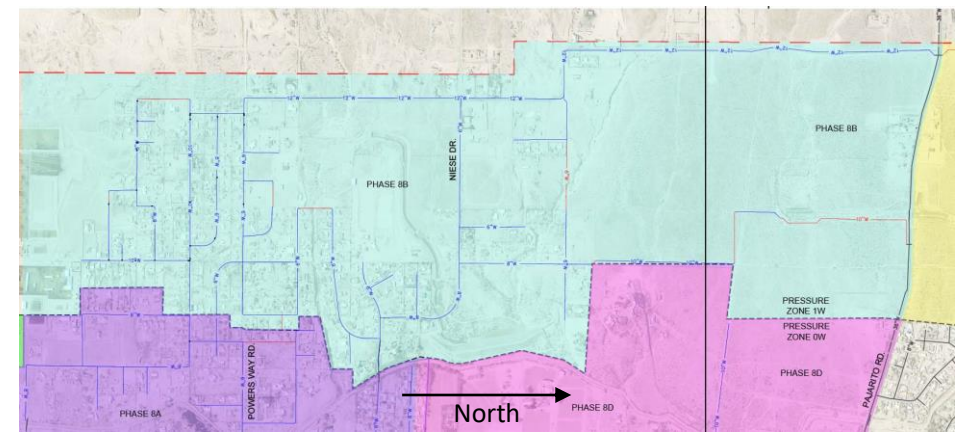
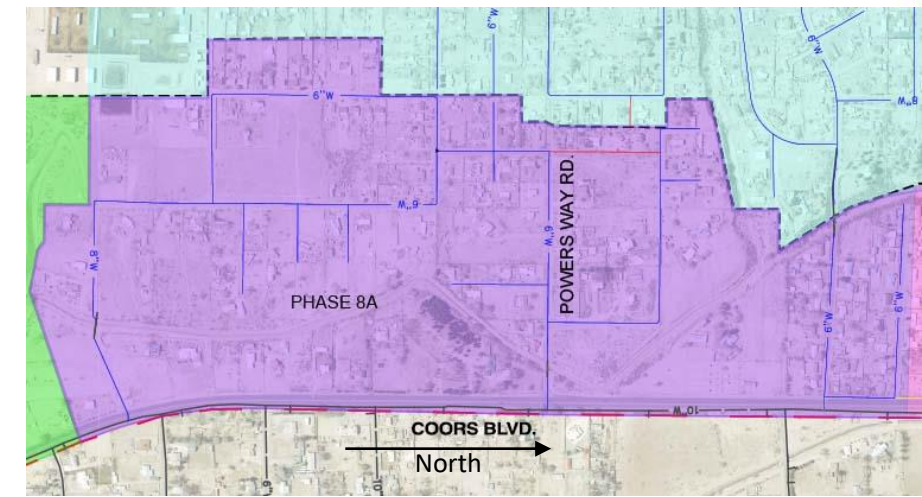
Anticipated Schedule

- Design of **Phases 8A and 8B** to be completed by **winter of 2023/spring of 2024**
- Contractor for Phases 8A and part of 8B to be selected by **spring 2024**
- Construction of Phases 8A and part of 8B to be completed by **winter 2025**
- **Remaining sections of Phases 8B, 8C, 8D and 9 do not have a timetable because funding has not been secured.**



Construction Phases

- The Water Authority received \$8 million in American Rescue Plan Act (ARPA) funds from Bernalillo County to design and construct water infrastructure and provide service to as many residents as possible within the South Valley Phases 8 and 9.
- Funds will be used to expand the water system to Phase 8A and part of Phase 8B.
- The extent of expansion within Phase 8B will be decided based on cost from submitted contractor bids.





Anticipated Construction Impacts

- Trenching operations will mostly be within existing public right-of-way.
- Property owners will be given a blue flag to provide approximate location of new water meter.
- Property owners may have limited access to property during day-to-day construction. Contractor will coordinate with residents to provide access.





Anticipated Construction Impacts

- Contractor will be responsible for site conditions and provide water during trenching operations to limit dust in the area.
- Contractor will follow residential noise ordinance to limit resident disturbance.
- Contractor will work on weekdays during the day except during emergencies.
- During construction, contractor will coordinate with residents and agencies responsible for trash pickup and mail delivery.





Questions and Answers

Q: I currently receive water service from Western Terrace Water System. Can I continue my service with Western Terrace after construction?

A: Yes, you can continue to get your water from Western Terrace.

Q: Do I have to hook up to the Water Authority line after it is done?

A: No. You can continue to use well water if your well is in proper working order.

Q: If I connect to the new waterline, can I continue to use my private well?

A: Yes. Residents who connect can continue to use their wells for irrigation.

Wells must be properly disconnected from household plumbing.

Q. Will I be required to put a meter on my private well?

A. No.



Questions and Answers

Q: Why should I consider connecting to the new water system?

A: Unlike water from private wells, the quality of the municipal water supply is regulated by the Environmental Protection Agency under the Safe Drinking Water Act.

Q: How do I connect to the new water system?

A: Once the waterline is installed along your street, you can call the Water Authority to schedule a connection. You will have to arrange with a licensed plumber, or obtain a DIY permit from Bernalillo County, to install the line from the meter to your house.

Q. How much will I have to pay for water each month if I decide to connect?

A. Your monthly bill will depend on how much water you use and the size of your meter.



Questions and Answers

UTILITY EXPANSION CHARGES (UEC) AS OF JULY 1, 2022

SERVICE SIZE	SERVICE	FULL PAYMENT	DOWN PAYMENT	TERMS	BALANCE TO FINANCE
3/4"	WATER	\$3,557	\$178	7% INTEREST FOR 10 YRS. AT \$39.24 PER MONTH	\$3,379
	SEWER	\$2,668	\$133	7% INTEREST FOR 10 YRS. AT \$29.44 PER MONTH	\$2,535
	METER	\$310	\$310	TOTAL PER MONTH	\$68.68
	TOTAL	\$6,535	\$621		
	WATER ONLY	\$3,867	\$488		

WATER RESOURCE CHARGE (WRC) FOR 2023

Effective 7/01/2023, Year 4 Phase-in:

5/8 X 3/4"

\$3,332

\$167

Down Payment

\$3,165

Remainder Financed over 10 yrs. At 7% APR



Questions and Answers

Q. Will it cost me anything to connect?

A. Yes. All new customers are required to pay a utility expansion charge (UEC) and a meter installation fee. New customers are also responsible for hiring their own licensed plumber to make the connection between the meter and the house, or obtaining the necessary permit from Bernalillo County if they wish to do it themselves. Customers with homes built after the established SVDWP Project date of 5/21/2008 will also be required to pay the WRC. More information is available at this meeting.

Q. Is financial assistance available?

A. Depending on your household income, assistance may be available through Bernalillo County's PIPE program. More information about that program is available at this meeting. Also, the Water Authority offers a loan program that allows residents to pay the cost over 10 years, at an annual interest rate of 7 percent, after making a small downpayment. More information is available at this meeting.



Questions and Answers

- Q. I own an undeveloped property within the area that will be constructed. Will my property receive a water meter or water meters for future development?**
- A. Vacant lots within developed residential areas will also receive a new service. Lots excluded from water meter and service line installation include undeveloped properties outside of developed areas and lots larger than three acres.*

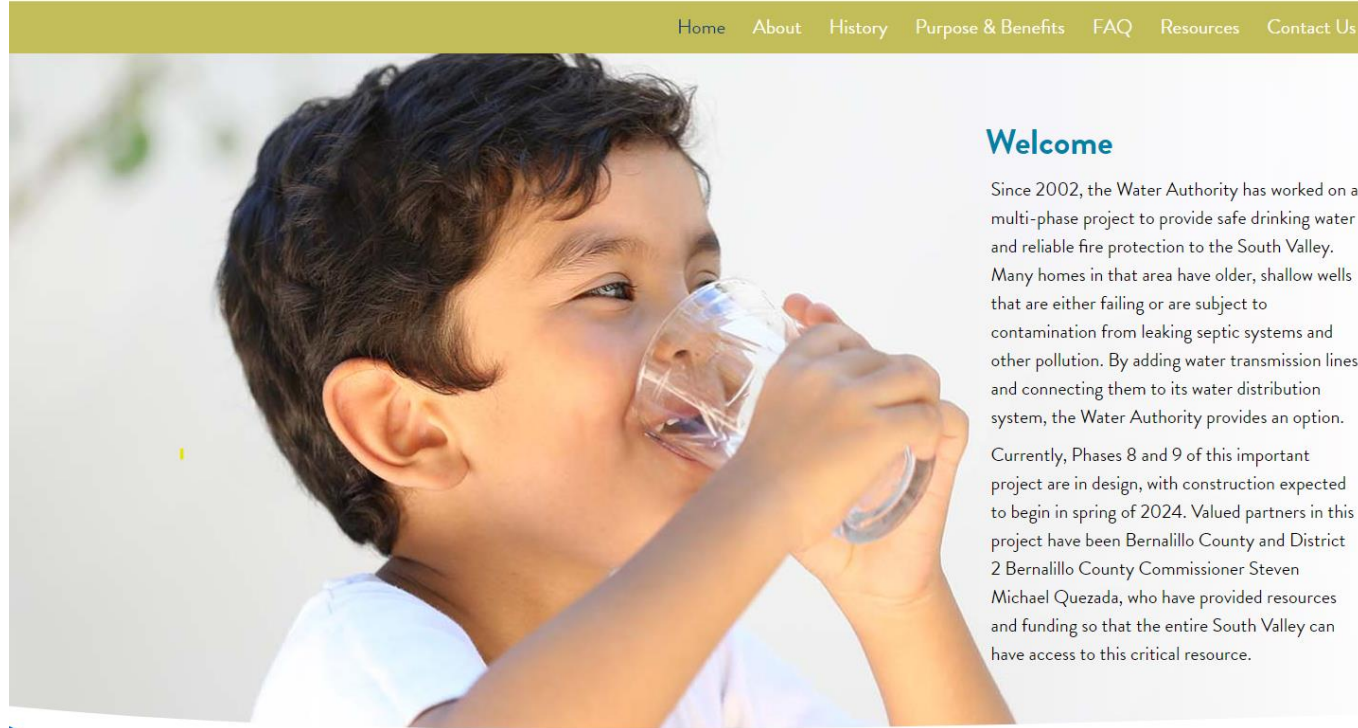
Project Website



South Valley Drinking Water Project – Phases 8 and 9

www.svdwp.com

[Home](#) [About](#) [History](#) [Purpose & Benefits](#) [FAQ](#) [Resources](#) [Contact Us](#)



Welcome

Since 2002, the Water Authority has worked on a multi-phase project to provide safe drinking water and reliable fire protection to the South Valley. Many homes in that area have older, shallow wells that are either failing or are subject to contamination from leaking septic systems and other pollution. By adding water transmission lines and connecting them to its water distribution system, the Water Authority provides an option.

Currently, Phases 8 and 9 of this important project are in design, with construction expected to begin in spring of 2024. Valued partners in this project have been Bernalillo County and District 2 Bernalillo County Commissioner Steven Michael Quezada, who have provided resources and funding so that the entire South Valley can have access to this critical resource.



Thank You!

If you have questions or comments, please contact:

Patti Watson, CWA Strategic Communications

505-245-3131 Office, 505-269-9691 Cell, pattiw@cwastrategic.com

Ty Stevers, CWA Strategic Communications

505-245-3128 Office, 505-417-9989 Cell, tys@cwastrategic.com

To have your questions or comments be part of the record for this public meeting, please send them in by May 31, 2023.